

RICHMOND PARK

WHITFIELD KENT



miles & barr

LAND & NEW HOMES



HALSBURY

A TRADITION OF CLASSICAL ELEGANCE

WELCOME TO RICHMOND PARK

At Halsbury we don't start with a standard blueprint, we start with world renowned classic architect Francis Terry.

Our passion and dedication enables us to offer you a home you can be justly proud of. A home built around classical Georgian elegance offering style, quality and traditional values.

Our unique approach equates to a truly distinctive range of homes with an elegant blend of contemporary style, innovation and tradition.





CLASSICAL
ELEGANCE

A CONSIDERED APPROACH TO HOUSE BUILDING

Our approach is inspired by the enduring elegance and traditional aesthetic appeal of a bygone era.

At Halsbury Homes, we bring together experts from across the property development sector to create homes that combine timeless style with all the convenience of modern living.

With generous proportions, our individual and well appointed properties provide light, airy and flexible living spaces with high-quality fixtures and finishes. All are designed to complement each other and their surroundings, blending seamlessly with the environment.

Quality craftsmanship. Thoughtful design. A passion for making every customer proud to call their new house a home. Halsbury Homes are committed to ensuring customer satisfaction, making the buying process just as pleasurable as owning your new home.

WORLD- RENOWNED ARCHITECTURE

Unique among housebuilders, our properties are designed by world renowned classical architect, Francis Terry.

The Francis Terry team has a wealth of experience in design and construction, combined with a thorough understanding of the rules of classical architecture. Their work is a delightful expression of the timeless principles of traditional architecture. This can be seen in the architectural integrity of the houses designed for Halsbury Homes.

If you're looking for a quality new home with classical style, elegant proportions and exceptional attention to detail, look no further.

“WE’RE PROUD OF OUR UNIQUE PARTNERSHIP WITH HALSBURY HOMES, WHICH ENABLES BEAUTIFUL CLASSICAL ARCHITECTURAL DESIGN TO BE AVAILABLE ON A LARGER SCALE. IN OUR PARTNERSHIP WE SHARE A COMMON VISION, A PASSION FOR EXQUISITE DETAILING, CONSIDERED PROPORTIONS AND A LOVE OF EXCELLENT CRAFTSMANSHIP.”

FRANCIS TERRY
MA (CANTAB), DIP ARCH, RIBA



DISCOVER



WHITFIELD

ROLLING HILLS, FARMLAND AND
FRUIT-LADEN ORCHARDS – KENT
CERTAINLY LIVES UP TO ITS TITLE OF
'THE GARDEN OF ENGLAND'.



Images of Lorem Ipsum.

With traces of human occupation dating back to Saxon and even Roman times, the village of Whitfield is located just four miles inland from the centre of Dover, and today comprises one of the most desirable and sought-after residential areas in and around the town.

Whitfield's popularity stems in part from its open, more spacious character, which contrasts with the more densely built-up streets of Dover. It also retains much of its separate village identity and atmosphere, with its own surprisingly comprehensive amenities including sports and recreational facilities, both primary and secondary schools, three churches, and local shops catering for all day-to-day needs. Yet, at the same time, it is within easy reach of all the amenities that the town has to offer. Thanks to its strategically important location, commanding the narrowest part of the English Channel, Dover has been a major port since

Roman times. As you'd expect of a town of its size, it enjoys a fascinating choice of shopping, ranging from well-known high street stores to small independent shops offering everything from art and crafts to quality gifts, and including a designer outlet retail park located in the waterfront setting of Dover Marina. The town also features a wide range of restaurants and bars, a sports and leisure centre, and other amenities including a choice of both state and independent schools catering for all ages from 3 to 18 years, and a modern community hospital.

However, what makes the Dover area really special as a place to live is the fact that with numerous sailings each day to both Calais and Dunkirk, simply 'popping over to France' for lunch and a spot of continental retail therapy is always an option!



ON YOUR DOORSTEP

The Dover District offers a great lifestyle choice, combining idyllic countryside with rural hamlets and villages, and a world-famous coastline dominated by the White Cliffs of Dover.

The Dover District features some of the most vibrant seaside communities in the south east, including the cosmopolitan Deal and the charming medieval town of Sandwich. Discover the quaint cafes and independent shops on winding cobbled streets in the harbour town of Folkestone. There is plenty to explore at your leisure, from stunning heritage coast walks to historic castles, picturesque beaches and beautiful lynx golf courses.

In addition to being the closest town in the UK to France, Whitfield also benefits from high speed rail links to the Capital via Dover Priory station which transports you to London within an hour. Served by both the M2 and M20 motorways, Dover offers fast connections to the M25 orbital for road access to Gatwick, Heathrow, Stansted and London City airports and beyond with ease.

THE BEST OF
BOTH WORLDS



Images of Kent countryside, Dover Castle and Dover coastline





HALSBURY



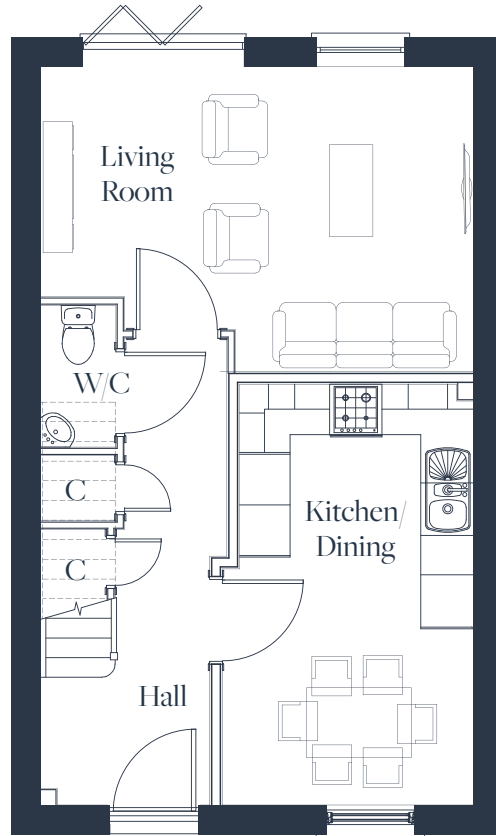
Computer generated image



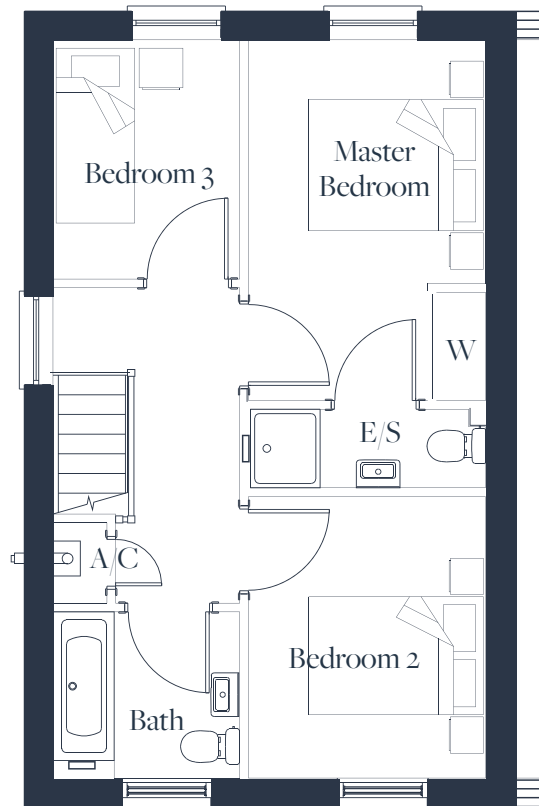
THE BRANCASTER

Overall size - 77 sq m, 829 sq ft

Kitchen	3910mm x 2780mm	12'10" x 9'2"
Living/Dining	5100mm x 3530mm	16'9" x 11'7"
<hr/>		
Master Bedroom	4430mm (max) x 3070mm	14'6" (max) x 10'1"
Bedroom 2	3260mm x 2770mm	10'8" (max) x 9'1"



GROUND
FLOOR



FIRST
FLOOR





HALSBURY



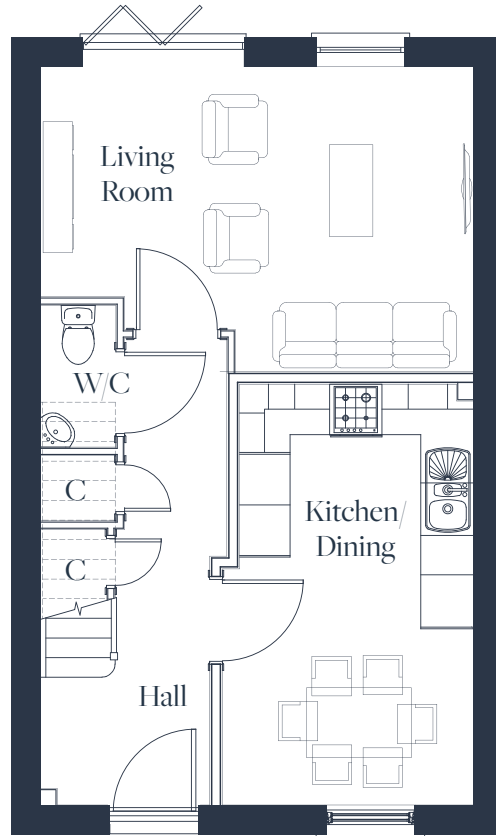
Computer generated image



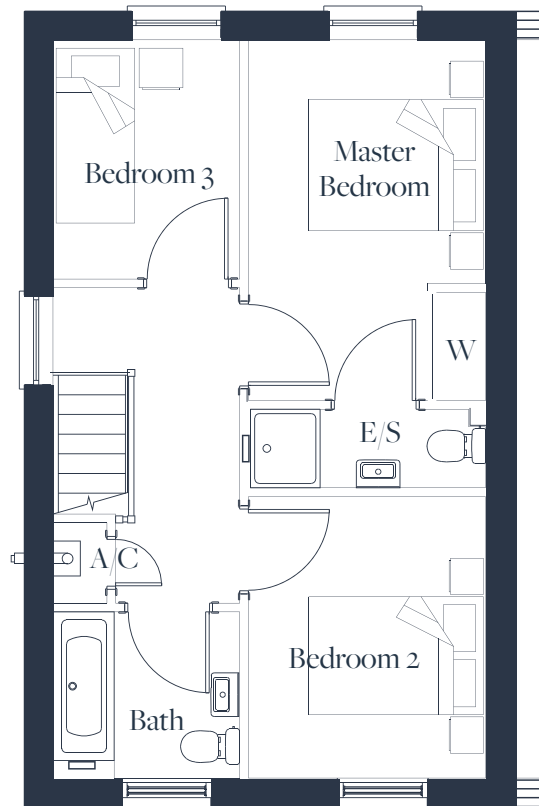
THE LANGHAM

Overall size - 85 sq m, 914 sq ft

Kitchen/Dining	4820mm x 2870mm (max)	15'10" x 9'5" (max)
Living Room	4950mm x 3480mm	16'3" x 11'5"
<hr/>		
Master Bedroom	4130mm x 2710mm	13'6" x 8'10"
Bedroom 2	3220mm x 2710mm	10'7" x 8'10"
Bedroom 3	2740mm x 2140mm	9'0" x 7'0"



GROUND FLOOR



FIRST FLOOR





HALSBURY



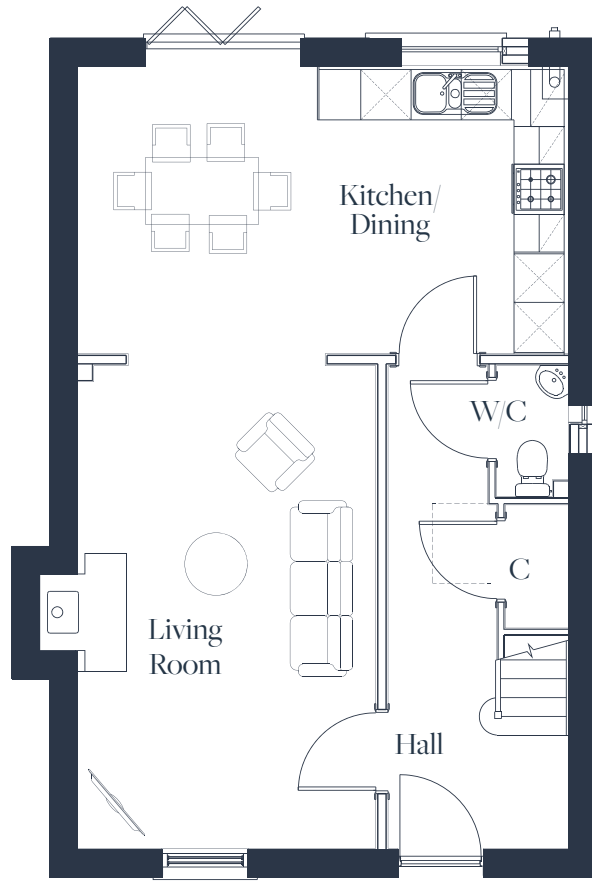
Computer generated image



THE RAVENINGHAM

Overall size - 111 sq m, 1195 sq ft

Kitchen/Dining	5860mm x 3440mm	19'3" x 11'3"
Living Room	5760mm x 3560mm	18'11" x 11'8"
<hr/>		
Master Bedroom	5200mm x 3080mm	17'1" x 10'1"
Bedroom 2	4160mm x 2810mm	13'8" x 9'3"
Bedroom 3	2950mm x 2800mm	9'8" x 9'2"



GROUND FLOOR



FIRST FLOOR





HALSBURY



Computer generated image

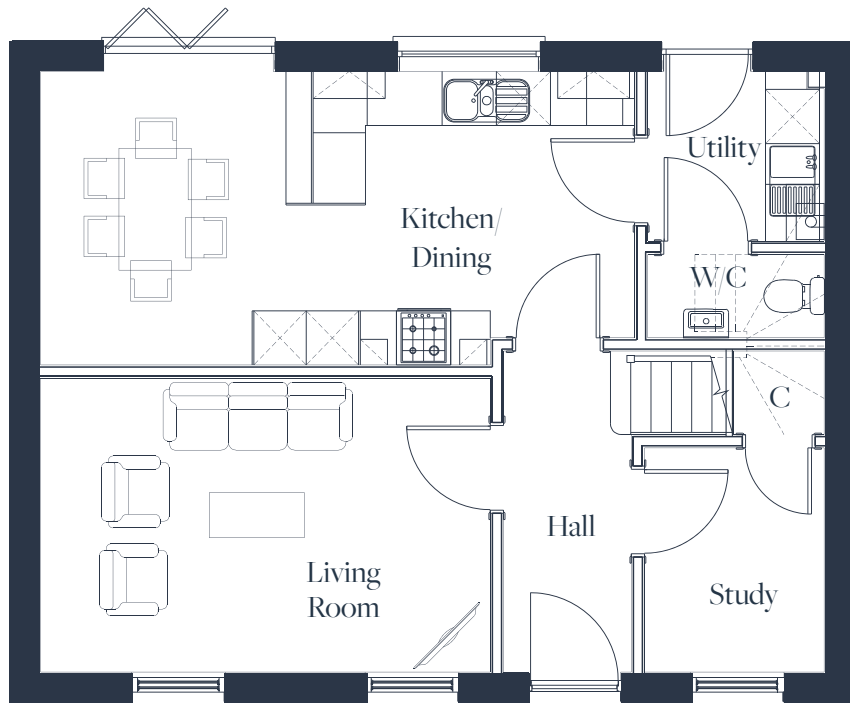


THE HOLKHAM - A

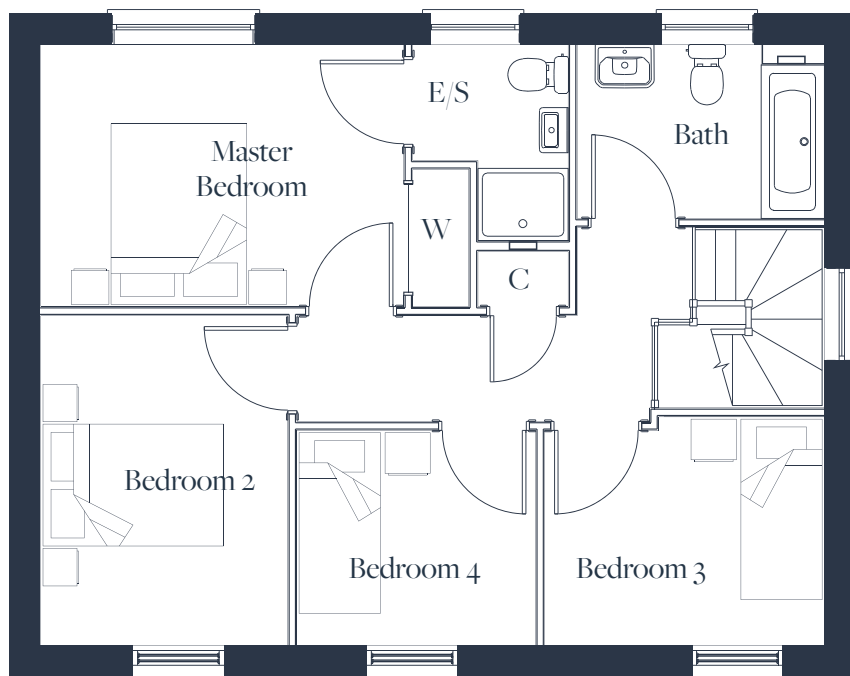
Overall size - 117 sq m, 1257 sq ft

Kitchen/Dining	6580mm x 3520mm (max)	21'7" x 10'8" (max)
Utility	1950mm x 1880mm	6'5" x 6'2"
Living Room	4980mm x 3250mm	16'4" x 10'8"
Study	2480mm x 1990mm	8'2" x 6'10"
<hr/>		
Master Bedroom	4020mm x 2900mm	13'2" x 9'6"
Bedroom 2	3650mm x 2740mm	12'0" x 9'0"
Bedroom 3	3100mm x 2530mm (max)	10'2" x 8'4" (max)
Bedroom 4	2640mm x 2380mm	8'8" x 7'10"

Note – Side Entrance to Elevation B Dining area, additional window to master bedroom



GROUND FLOOR



FIRST FLOOR





HALSBURY



Computer generated image

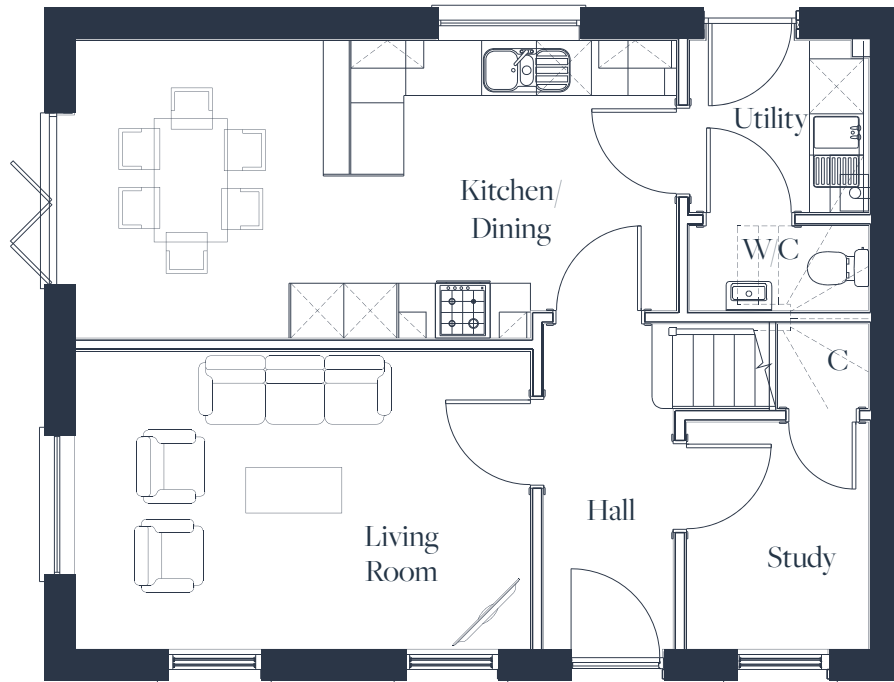


THE HOLKHAM - B

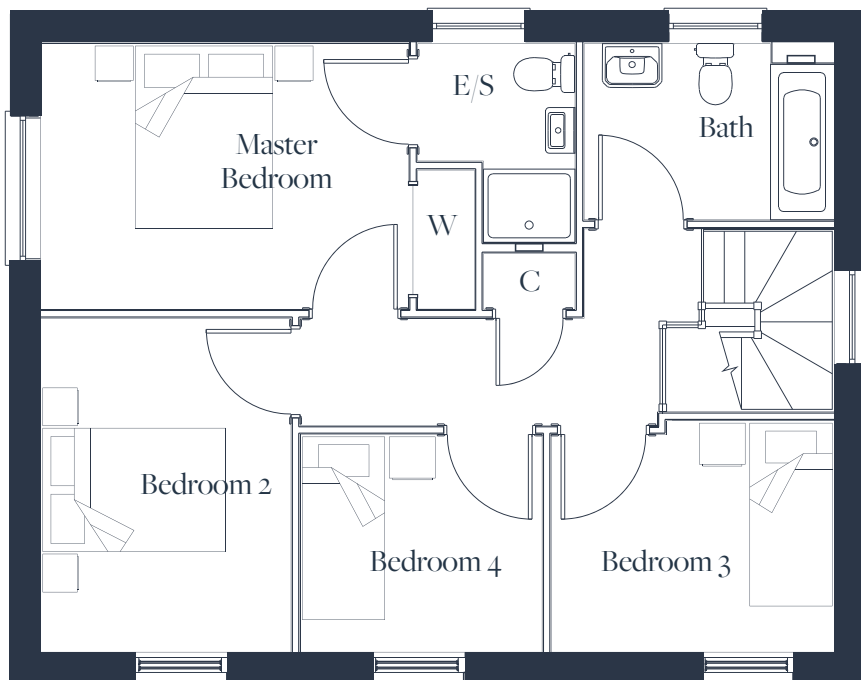
Overall size - 117 sq m, 1257 sq ft

Kitchen/Dining	6580mm x 3520mm (max)	21'7" x 10'8" (max)
Utility	1950mm x 1880mm	6'5" x 6'2"
Living Room	4980mm x 3250mm	16'4" x 10'8"
Study	2480mm x 1990mm	8'2" x 6'10"
<hr/>		
Master Bedroom	4020mm x 2900mm	13'2" x 9'6"
Bedroom 2	3650mm x 2740mm	12'0" x 9'0"
Bedroom 3	3100mm x 2530mm (max)	10'2" x 8'4" (max)
Bedroom 4	2640mm x 2380mm	8'8" x 7'10"

GROUND FLOOR



FIRST FLOOR





HALSBURY



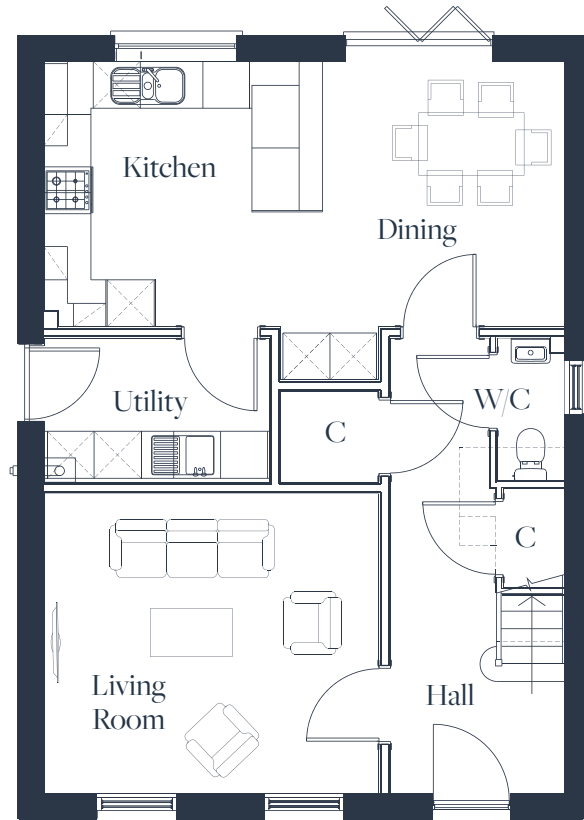
Computer generated image



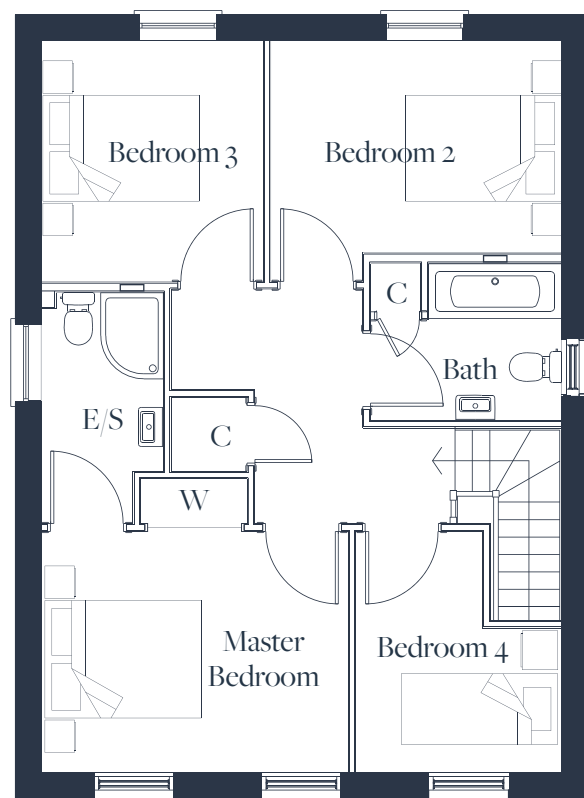
THE AUDLEY

Overall size - 125 sq m, 1355 sq ft

Kitchen	3560mm x 3390mm	11'8" x 11'2"
Dining	3390mm x 3090mm	11'2" x 10'2"
Utility	2880mm x 1840mm	9'6" x 6"
Living Room	4280mm x 3820mm	14'1" x 12'7"
<hr/>		
Master Bedroom	3920mm x 3080mm	12'11" x 10'1"
Bedroom 2	3710mm x 2700mm	12'2" x 8'10"
Bedroom 3	3070mm x 2830mm	10'1" x 9'4"
Bedroom 4	3080mm (max) x 2630mm	10'1" (max) x 8'8"



GROUND FLOOR



FIRST FLOOR





HALSBURY



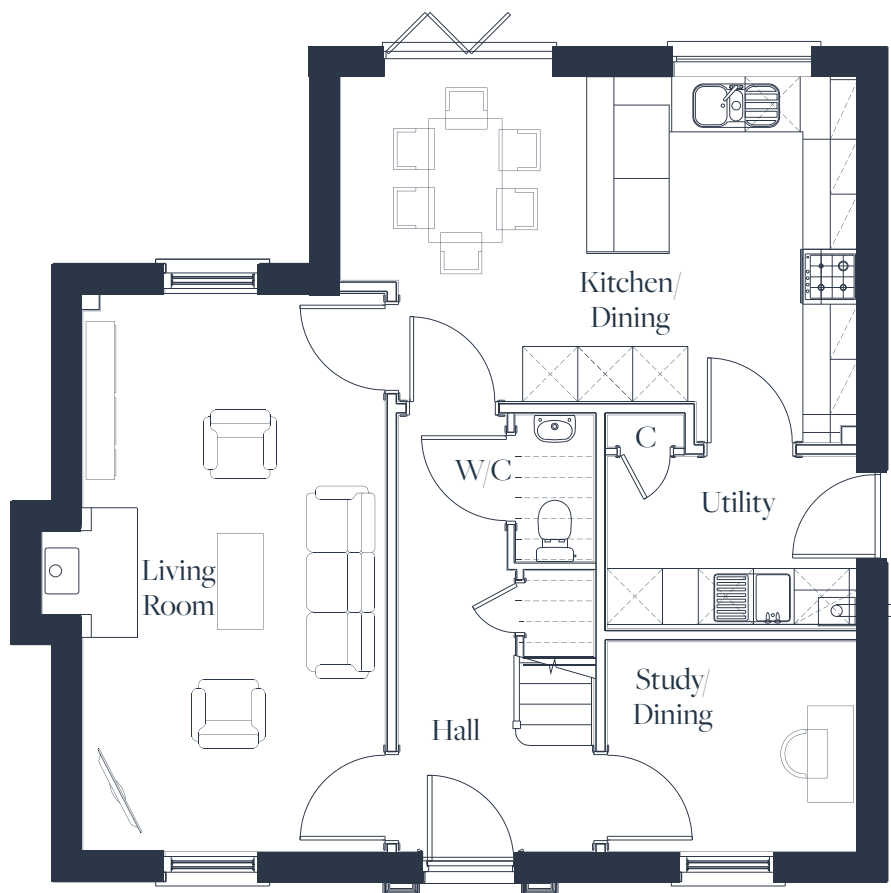
Computer generated image



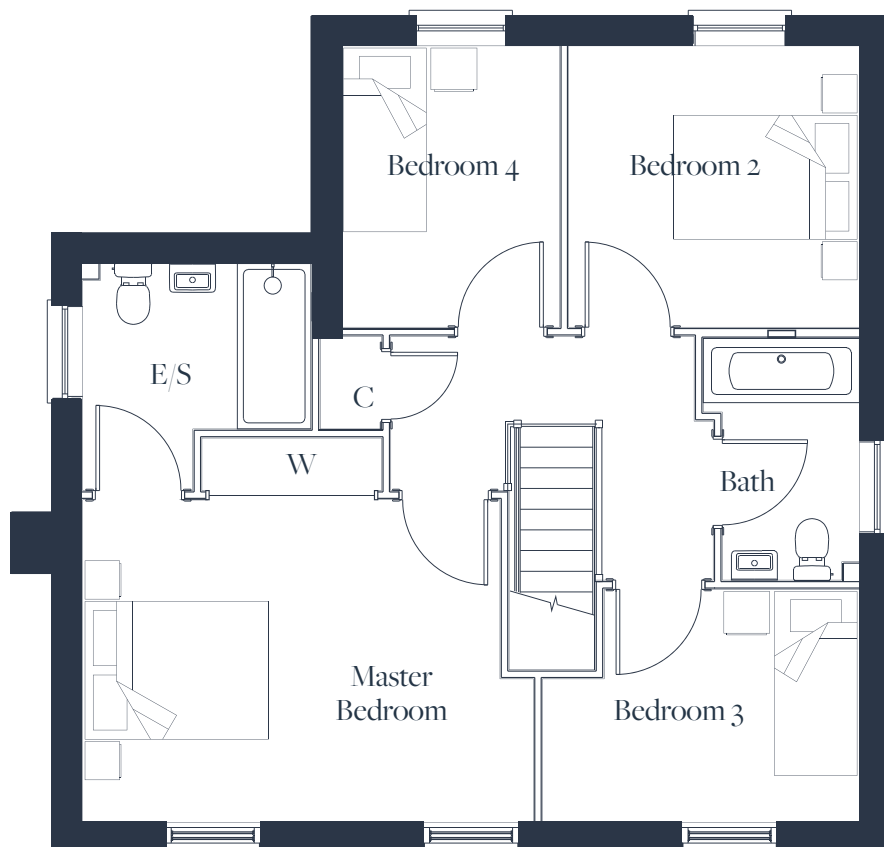
THE BLICKLING

Overall size - 131 sq m, 1410 sq ft

Kitchen/Dining	5640mm (max) x 3990mm (max)	18'6" (max) x 13'1" (max)
Utility	2730mm x 1820mm	9'0" x 6'0"
Living Room	6090mm x 3290mm	20'0" x 10'10"
Study/Dining	2730mm x 2340mm	8'11" x 7'8"
<hr/>		
Master Bedroom	4900mm(max) x 3510mm	16'1" (max) x 11'6"
Bedroom 2	3160mm x 3060mm	10'4" x 10'0"
Bedroom 3	3450mm (max) x 2540mm	11'4" (max) x 8'4"
Bedroom 4	3060mm x 2380mm	10'0" x 7'10"



GROUND FLOOR



FIRST FLOOR



HALSBURY



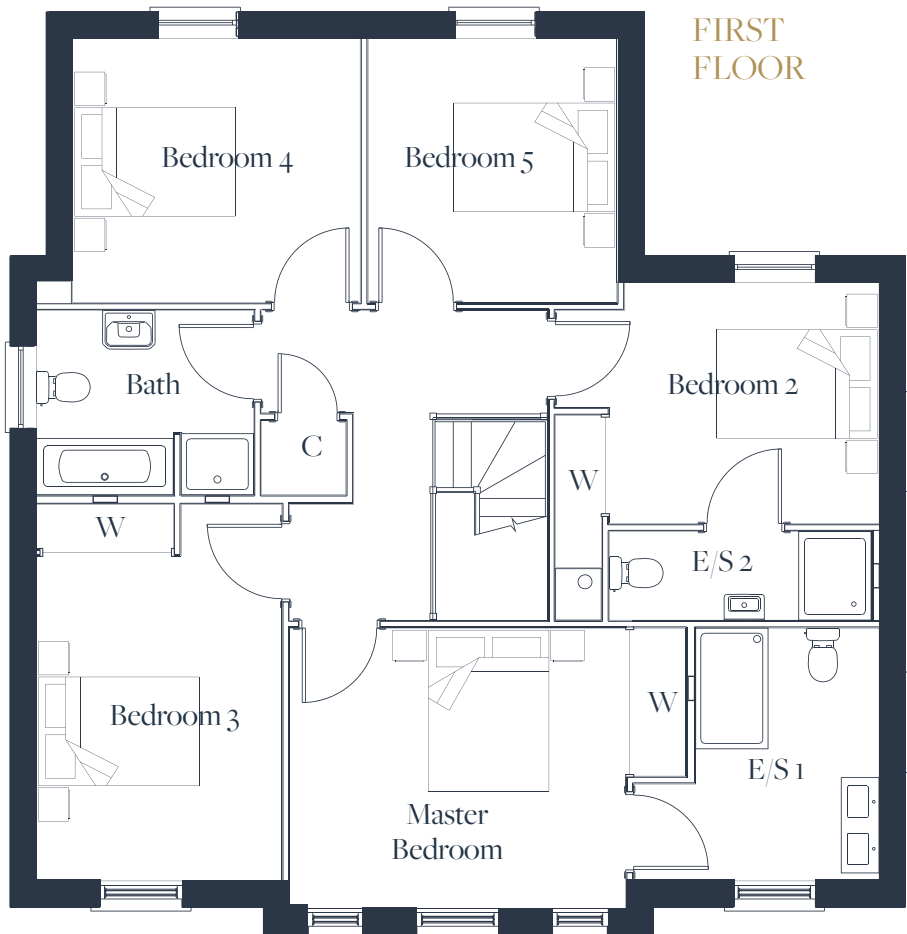
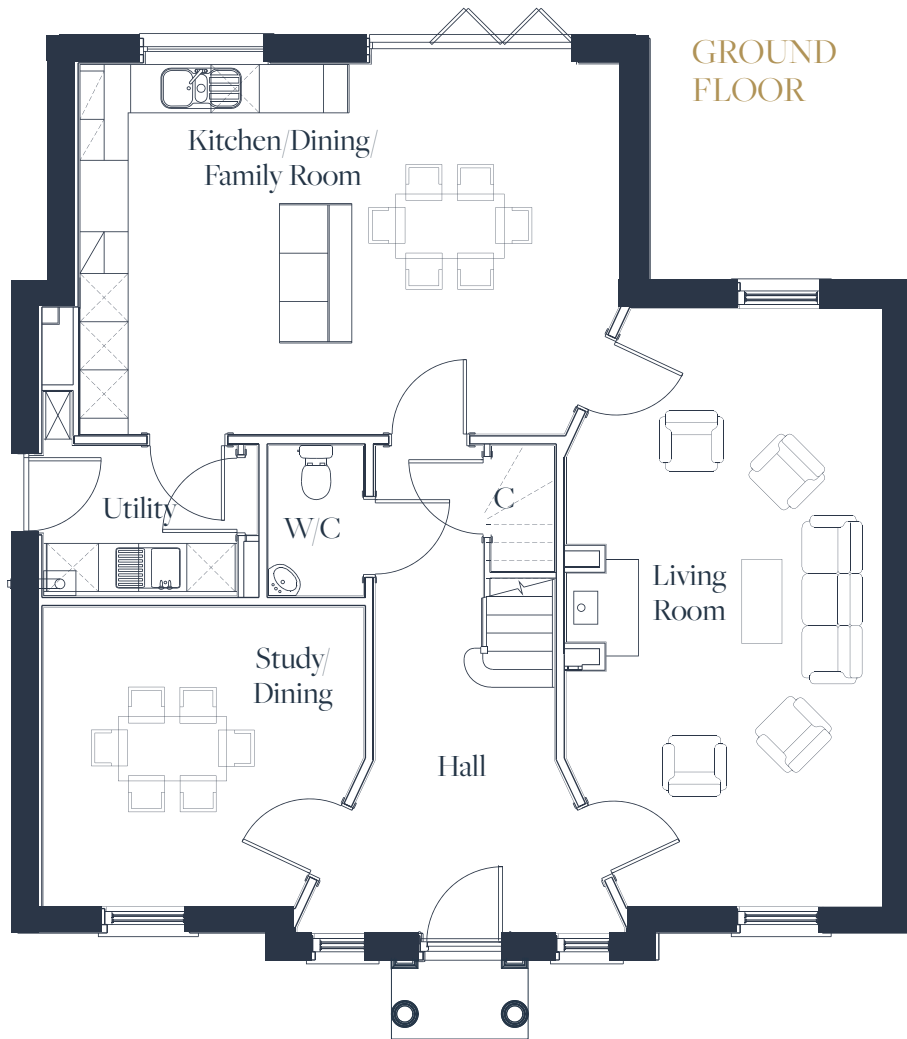
Computer generated image











THE MUNDHAM - B

Overall size - 201 sq m, 2171 sq ft

Kitchen/Dining/Family Room	6760mm x 4600mm	22'2" x 15'1"
Utility	2400mm x 1860mm	7'11" x 6'1"
Living Room	7440mm x 3980mm	24'5" x 13'1"
Study/Dining	3980mm x 3720mm	13'1" x 12'2"
<hr/>		
Master Bedroom	4170mm x 3480mm	13'8" x 11'6"
Bedroom 2	3350mm x 2990mm	11'0" x 9'10"
Bedroom 3	4700mm (max) x 3050mm	15'5" (max) x 10'0"
Bedroom 4	3570mm x 3280mm	11'9" x 10'9"
Bedroom 5	3280mm x 3090mm	10'9" x 10'2"



SITE MAP

-  **THE MUNDHAM - B**
Plots 99, 100 & 101
-  **THE BLICKLING**
Plots 102 & 118
-  **THE AUDLEY**
Plot 124
-  **THE HOLKHAM - A**
Plots 103, 109, 110, 113, 119 & 120
-  **THE HOLKHAM - B**
Plots 95 & 104
-  **THE RAVENINGHAM**
Plots 98 & 117
-  **THE LANGHAM**
Plots 96, 97, 105, 106, 107, 108, 111, 112, 125 & 126
-  **THE BRANCASTER**
Plots 114, 115, 116, 121, 122 & 123









TRANSPORT LINKS

Its location on the outskirts of Dover and its proximity to the A2 trunk road means that the M25 and the Dartford Crossing can be reached in under an hour, providing fast access to the rest of the national motorway network. Ashford International station is just 30 minutes' away, with central London reachable in approximately 40 minutes in one direction, and Paris in less than 2½ hours in the other, whilst the HS1 from Dover Priory station will have you in central London in a little over an hour.

All the time, the lovely rolling Kent countryside is only a stone's throw away. Small wonder that Whitfield is a particularly popular choice for young families.

BY ROAD

Canterbury 30 minutes

Ashford International 30 minutes

Ebbsfleet International 1 hour 10 minutes

Stratford International 2 hours

St. Pancras International 2 hours 30 minutes

London Victoria 2 hours 30 minutes

BY RAIL

Canterbury 20 minutes

Ashford International 26 minutes

Ebbsfleet International 45 minutes

Stratford International 57 minutes

St. Pancras International 1 hour 5 minutes

London Victoria 1 hour 30 minutes

BY ROAD & FERRY

Calais 100 minutes

SAT NAV POSTCODE: CT16 3FP



RICHMOND PARK

WHITFIELD | KENT | CT16 3FP



miles&barr

LAND & NEW HOMES

SALES CONTACT

landandnewhomes@milesandbarr.co.uk

01304 273 340



HALSBURY

This development consists of different property styles and the photographs, computer generated imagery and floor plans shown are for general guidance only. All the floor plans and the room sizes shown have been taken from plans prior to construction and their accuracy cannot be confirmed. The computer generated images featured here are impressions of the design only which are subject to change and the finished properties may therefore differ. This brochure and the information contained within does not constitute or form part of an offer or contract nor may they be regarded as representations. All interested parties must themselves verify their accuracy.

Designed and produced by weareborne.com.